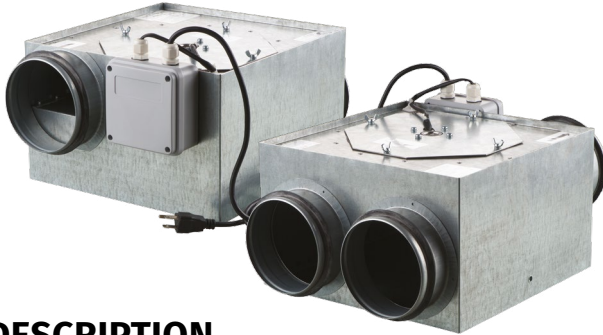


PRODUCT SPECIFICATIONS

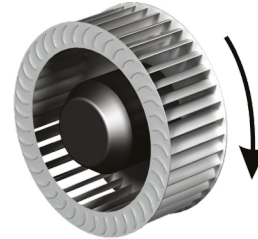
TECHNICAL DATA

CENTRIFUGAL IN-LINE FANS



EXCELLENT AERODYNAMICS & LOW NOISE

The external rotor motor on ball bearings and the forward curved, balanced impeller is suitable for high pressure application, prevent vibration and assure quiet operation.



DESCRIPTION

VKPF series fans are specially designed for extract and input ventilation and are perfect air movement solution for areas with tight spaces. It provides airflow up to 267 CFM (VKPF 125/125*2). Fans is suitable for a wide range of residential and light commercial applications such as high-rise condominium, office buildings, schools, boardrooms etc. The fans offer a variety of choices of extract and input ventilation options and enables ducting from multiple sources.

HOUSING

The fan's housing is made of galvanized steel. Available with two inlets.

INSTALLATION BENEFITS

Suitable for low ceilings and tight spaces.

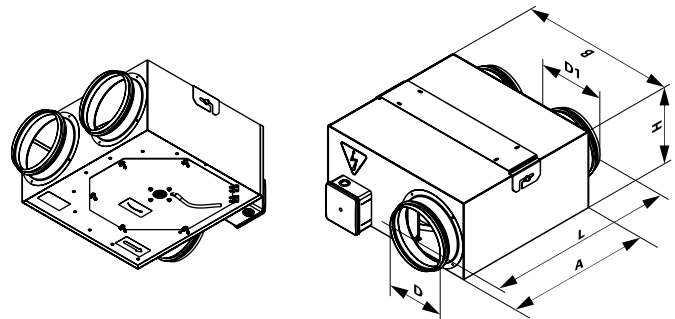
PERFORMANCE

| MODEL | Duct dia | Max Watts* | Max Amps* | Sones | CFM vs. Static Pressure (Ps) in WG | | | | | | | | | | | Max. Ps | Volts/ Hz |
|----------------|----------|------------|-----------|-------|------------------------------------|------|------|------|------|------|------|------|------|------|----|---------|-----------|
| | | | | | 0" | 0.1" | 0.2" | 0.3" | 0.4" | 0.5" | 0.6" | 0.7" | 0.8" | 0.9" | 1" | | |
| VKPF 125/125*2 | 5" | 80 | 0.68 | 3.5 | 267 | 256 | 246 | 234 | 216 | 195 | 177 | 152 | 55 | | | 0.84 | 120 / 60 |

* Indicated at 0.2 in.W.G.

DIMENSIONS

| MODEL | MEASUREMENTS [in.] | | | | | |
|----------------|--------------------|-----|---------------------------------|--------------------------------|--------------------------------|-------------------------------|
| | D" | D1" | A" | B" | L" | H" |
| VKPF 125/125*2 | 5 | 5 | 9 ²⁹ / ₃₂ | 11 ¹ / ₈ | 14 ⁵ / ₈ | 7 ¹ / ₂ |



| MODEL | QUANTITY | COMMENTS | PROJECT |
|-------|----------|----------|---------------|
| | | | location: |
| | | | architect: |
| | | | engineer: |
| | | | contractor: |
| | | | submitted by: |

Tel: 888-640-0925
513-348-3853
Fax: 513-268-4597

Sales@ventsus.com
VentsUS.com
11013 Kenwood Road,
Cincinnati, Ohio 45242

